



*This is how beautiful & high quality pearls are cultured*

## Shop Information

### Kabira main store

Factory store in front of Kabira Bay, where black pearls culturing started.



### R's Cafe

■ Café nearest from Kabira Bay. You can taste snacks and cakes of locally produced ingredients enjoying its panoramic view.



934 Kabira Ishigaki, Okinawa Postal Code 907-0453  
TEL.(0980)88-2288

### How to access

- ① 35minutes by the car from Ishigaki Airport
  - ② 30minutes by the car from Ishigaki downtown
- Business hour 9:00am~6:00pm open throughout the year  
(R's café is open from 9:00am~5:00pm/ L.O 4:30pm)  
A free parking area is available(Capacity:15 standard-sized cars and 6 buses)

### Ishigaki store

- 3 Misaki-cho Ishigaki, Okinawa TEL.(0980)82-5027
- Access 3 minutes on foot from Ishigaki Ferry Terminal
- Business hours from 9:00 am~8:00pm

### Ishigaki Airport store

- 1960-104-1 Shiraho, Ishigaki, Okinawa TEL.(0980)87-0398

### ANA Intercontinental Ishigaki Resort store

- 354-1 Maezato, Ishigaki, Okinawa TEL.(0980)88-8877

### Hotel Nikko Yaeyama store

- 559 Okawa, Ishigaki, Okinawa TEL.(0980)88-6334

### Hotel Nikko Naha Grand Castle store

- 1-132-1, Yamakawa-cho, Shuri, Naha, Okinawa TEL.(098)885-2523

### Okinawa World store

- 1336, Tamagusuku Maekawa, Nanjo-city, Okinawa TEL.(098)949-1002

**Ryukyu-Pearl Co.,Ltd./Perljwe-Kabira Co.,Ltd.**

[Head Office]934 Kabira Ishigaki, Okinawa Postal Code 907-0453  
TEL.(0980)88-2288 FAX.(0980)88-2230  
<http://www.ryukyu-shinju.co.jp>



The first Black pearl in the world



**Kabira Bay Ishigaki Is.  
Gift from the ocean**

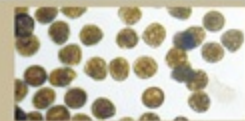


*Ryukyu-Pearl R.*



*Story of culturing Black and South Sea pearl*

Artificial Insemination



Oyster Larvae raise

Transfer to the sea

70~80 days after the insemination the oysters are transferred to the sea



Oyster nursery

Oyster Culture



Preparation

Grafting

A nucleus made of shell and a tiny piece of mantle are carefully implanted in the oyster cultured for 3~4 years



Recuperation

Check Process

Farming



Harvesting

After 5~6 years after the artificial insemination, the pearls are harvested



Sort Process

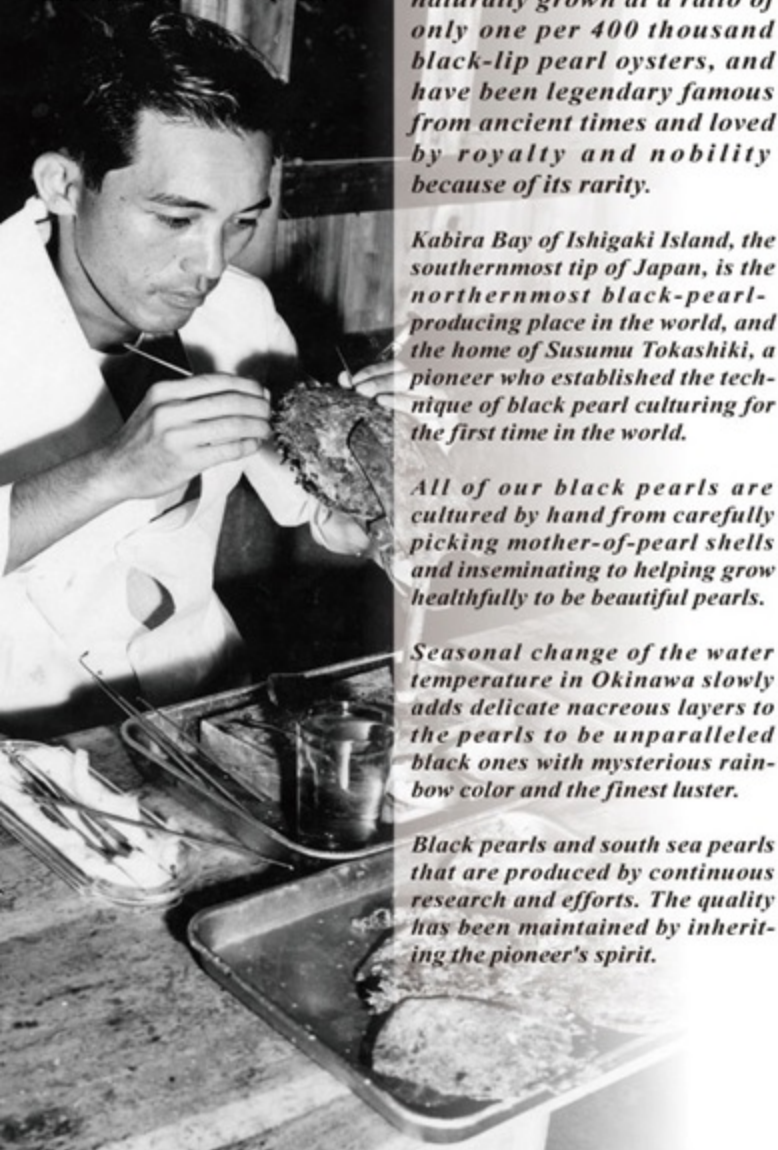


Final Product





**Susumu Tokashiki**  
the founder  
in the time of establishment



*Black pearls are said to be naturally grown at a ratio of only one per 400 thousand black-lip pearl oysters, and have been legendary famous from ancient times and loved by royalty and nobility because of its rarity.*

*Kabira Bay of Ishigaki Island, the southernmost tip of Japan, is the northernmost black-pearl-producing place in the world, and the home of Susumu Tokashiki, a pioneer who established the technique of black pearl culturing for the first time in the world.*

*All of our black pearls are cultured by hand from carefully picking mother-of-pearl shells and inseminating to helping grow healthfully to be beautiful pearls.*

*Seasonal change of the water temperature in Okinawa slowly adds delicate nacreous layers to the pearls to be unparalleled black ones with mysterious rainbow color and the finest luster.*

*Black pearls and south sea pearls that are produced by continuous research and efforts. The quality has been maintained by inheriting the pioneer's spirit.*

## Ryukyu Pearl History

- 1951 Established
- 1953 Succeeded in culturing Black Pearl for the first time in the world
- 1968 Achieved the production of large amounts of Black pearl with good quality
- 1980 Succeeded in seedling production of Black lipped oyster
- 1984 Succeeded in seedling production of Silver/Gold lipped oyster
- 1991 Succeeded in the production of large amounts of South Sea pearl for the first time in Japan
- 2000 Black pearl pendant of Ryukyu pearl was selected as one of the official presents for the first ladies at Kyusyu Okinawa Summit

Full of mysterious luster and various colors

## Black Pearl



**Mother Pearl** Black lipped pearl oyster

**Distribution** Tropical and subtropical seareas ranging from lat. 30°S. To lat. 30°N. Around the equator.



A necklace of about forty pearls is an eternal dream for women. Pearls can suit any situation.



Gorgeous hue and size with presence

## South Sea Pearl



**Mother Pearl** Golden/Silver lipped pearl oyster

**Distribution** Sea areas in the northern Australia and South Eastern Asia.



Choose unforgettable piece of your own pearl, as a memory of a trip, a gift for your important person.



We put serial numbers to the black pearls and south sea pearls that meet our quality standards and manage the data. The certificates that are given when purchasing pearls at our direct branches come with the serial numbers. Please do not worry for purchasing pearls from us - our after-sale supports are guaranteed.

## Tips of Selecting pearls

### Luster (glow)

Inner glow created through the layers of pearls, which is the most important factor when selecting pearls.

### Nacre (Pearl layers)

Pearl layers surrounding the nucleus, usually consisting of thousands of layers. Even and thick layers can add a beautiful luster.



Cross section of a black pearl (the white part is the nucleus)

### Scratch (dimple)

A tiny hollow created naturally during culturing is called as dimple. Pearls with fewer dimples are more highly valued, but due to its natural origin, pearls without dimples can rarely be found.

### Color

Pearls cultured in Ryukyu Shinju, our pearl farm, are not artificially colored. Their colors came from the colors of the mother-of-pearl shells. The impression very much depends on the colors, therefore we highly recommend you try several colors before you purchase pearls.



Various colors of black pearls



Various colors of South Sea pearls

### Size

Bigger ones are of higher value. Black pearls and south sea pearls come in various size - usually from 8 to 15 mm, and even bigger ones can be found on rare occasions.

### Shape

Pearls in the shape closer to perfect circle are highly valued, while teardrop-shaped pearls and baroque pearls have gained long-lasting popularity as unique accessories.



Drop-shaped black pearls

Feel free to ask us for any question about pearl selection. We are happy to help you choose your best pearls within the budget.